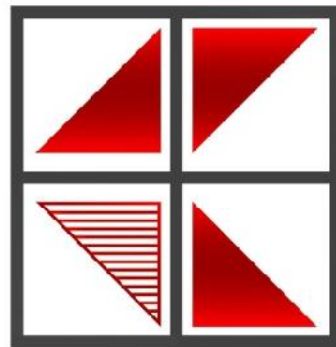


Chindhy's Interiors



Modern society increasingly demands more sustainable environmentally friendly homes; at Chindhy's we have the tools, innovation and experience to meet these demands.

Through our use of geothermics and thermal insulation we can deliver energy efficiency and lower energy costs to your self build home. With tailor made bespoke timber frame panels, we can provide you with the ultimate eco home.

Built entirely to meet your specifications and requirements, you dream – we build. We focus on quality, innovation, the environment, but primarily on you – our customers

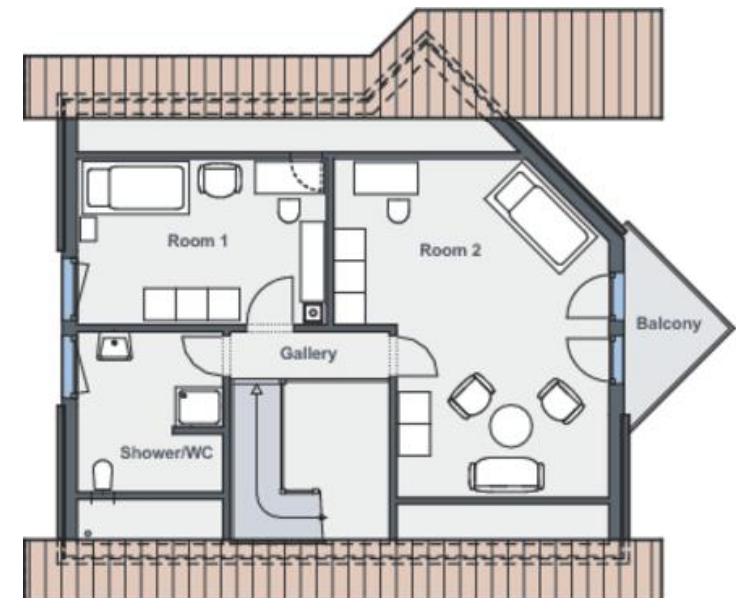
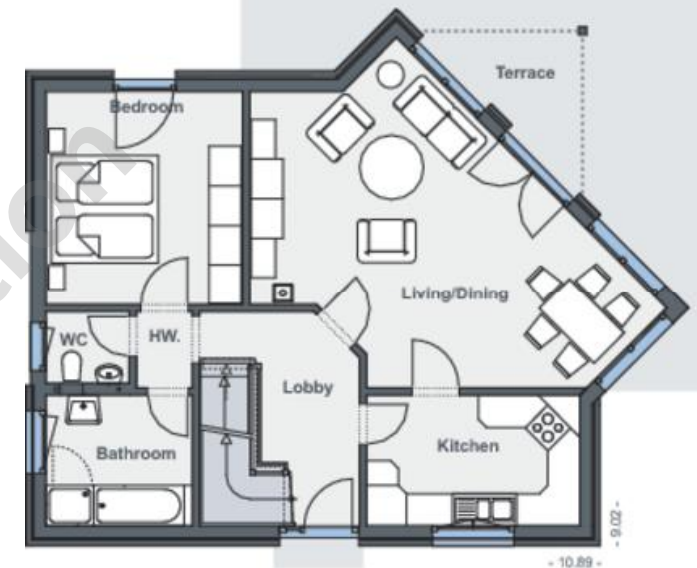


The living room, which is rotated by 45 degrees, combined with the red brick facade and the wooden elements painted in white is a popular design. The living room is flooded with natural light through the panorama windows and forms the centre of the house. The ground floor is planned with one bedroom and a bathroom so you can complete the attic floor at a later stage. In the end, you will have a total living space of 123 m

Classic 204



Exterior dimensions:	9.01m x 10.89m
Ground floor:	terrace, kitchen, living/dining, bedroom, WC, bathroom, hallway, lobby
Attic floor:	loggia, bedroom 2, bedroom 1, Shower/WC, gallery
Area:	134.35 m ²
Roof pitch:	34.00 °
Flap tile height:	80.00 cm
Architecture:	L-shape house
Roof:	gabled roof



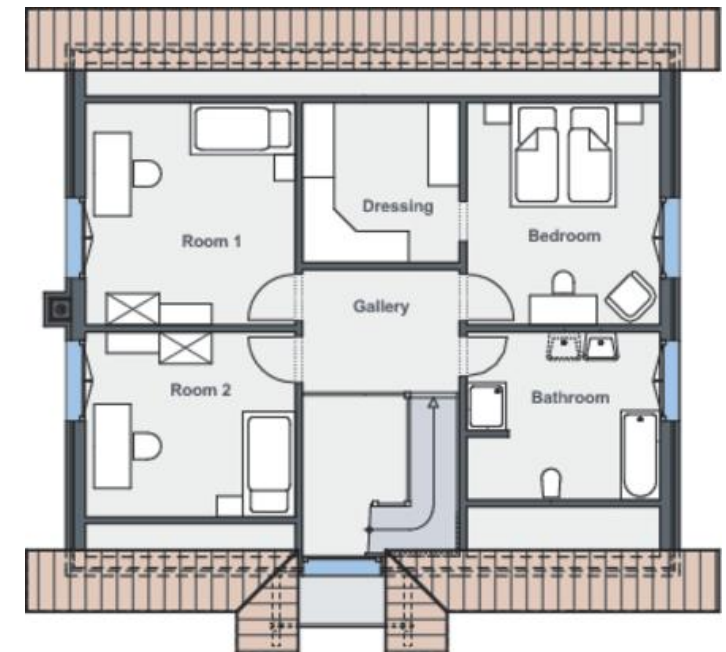
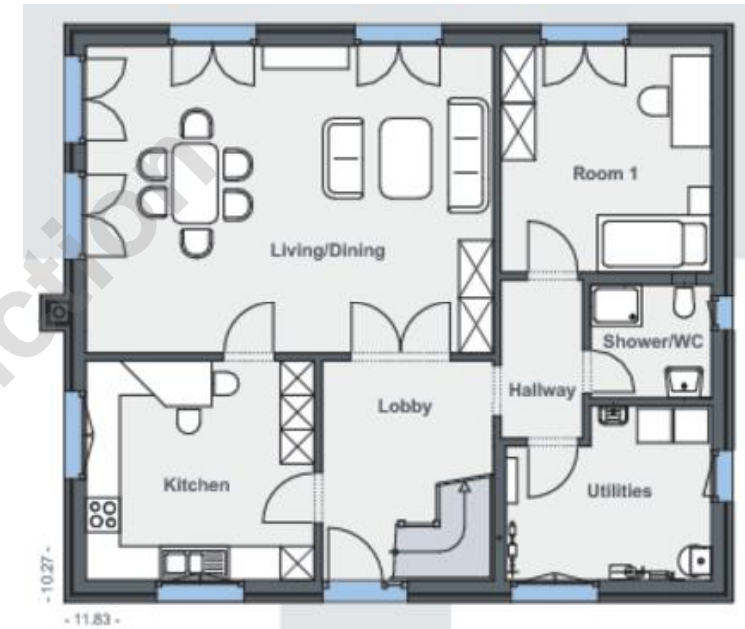


A generous house with harmonious shapes and colours. The roofed porch catches the eye along with a third gable which adds height to the entry area on the inside and offers scope for an open, light-flooded gallery on the upper storey. There is plenty of space here for a family with two to three children. And a range of optional features such as dormers, balconies and a garage can be installed to create even more luxury.

Classic 158-30



Exterior dimensions:	10.26m x 11.83m
Ground floor:	utilities, hallway, Shower/WC, bedroom 1, living/dining, kitchen, lobby
Attic floor:	bathroom, bedroom, dressing, bedroom 1, bedroom 2, gallery
Area:	171.08 m ²
Roof pitch:	38.00 °
Flap tile height:	40.00 cm
Architecture:	L-shape house
Roof:	gabled roof





The diagonal glass alcove in the centre of this house is a real eye-catcher - an architectural highlight and source of plenty of sunlight on both the ground floor and upstairs. The living area is open upwards, so that the glass alcove floods the entire house with light. The bathroom, which seems to float above the dining area, has a window that offers a view outdoors through the glass of the alcove. The house is designed to offer generous space for a family with two to three children.

Impuls 224-40



Ground floor: kitchen, utility room, WC, lobby, bedroom 1, living, dining

Attic floor: bedroom 2, bedroom 1, bedroom, dressing, gallery, bathroom

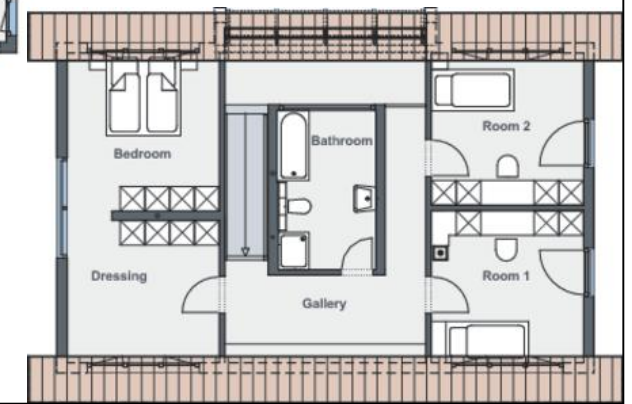
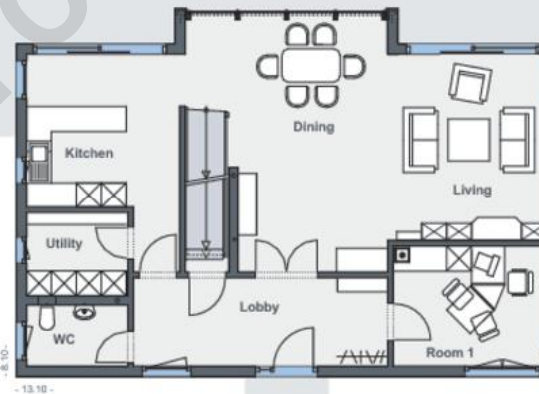
Area: 168.35 m²

Roof pitch: 28.00 °

Flap tile height: 160.00 cm

Architecture: town house

Roof: gabled roof



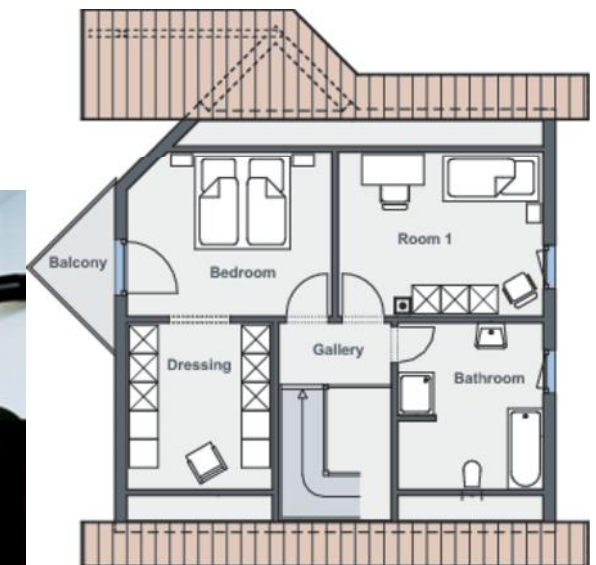


A double door leads from the hall to the representative living and dining area, which with just under 45m of floor space is the ideal setting for social events. The open-plan kitchen adjoins the living and dining area. The workroom can double as a guest room. The ground floor includes a shower bath with a toilet for guests. The upper storey of this design includes a children's room and a master bedroom with dressing room. However, the ground plan can be altered to convert the dressing room into an additional bedroom

Impuls 119-20



Exterior dimensions:	9.04m x 9.35m
Ground floor:	Shower/WC, kitchen, living/dining, bedroom 1, lobby, terrace
Attic floor:	bathroom, bedroom 1, bedroom, dressing, gallery, loggia
Area:	130.34 m ²
Roof pitch:	34.00 °
Architecture:	L-shape house





The first thing one notices in this house is the roofed balcony above a roofed terrace. Here you can enjoy the fresh air even when it rains. Another eye-catching feature is the corner alcove on the ground floor, which allows lots of light to flood the large living and dining area. The colour scheme is a defining element of the facade and visible wooden elements on the roof and the balcony. Here you can place a very personal stamp on your house. It is perfect for a family with two or three children. However, the 25m² room on the upper floor also offers space for a studio, an office or a flat for an elderly family member. A young family with no children can wait until later to finish the upper storey, as the ground floor includes the master bedroom and a spacious bath

Impuls 165-20



Exterior dimensions: 9.97m x 11.22m

Ground floor: lobby, WC, storage, kitchen, living/dining, bathroom, bedroom, terrace

Attic floor: gallery, Shower/WC, bedroom 3, bedroom 1, bedroom 2, balcony

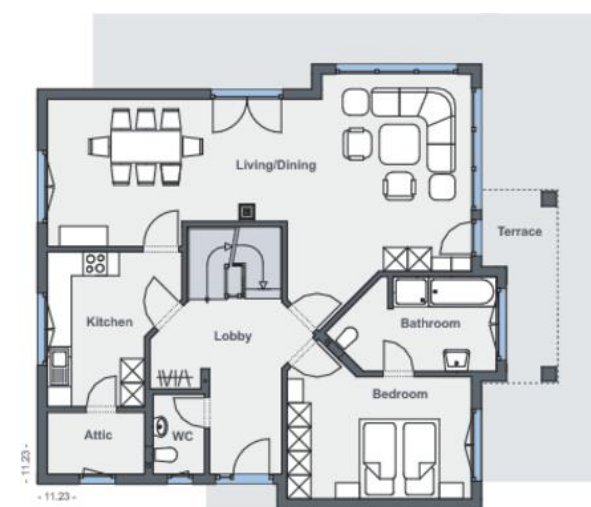
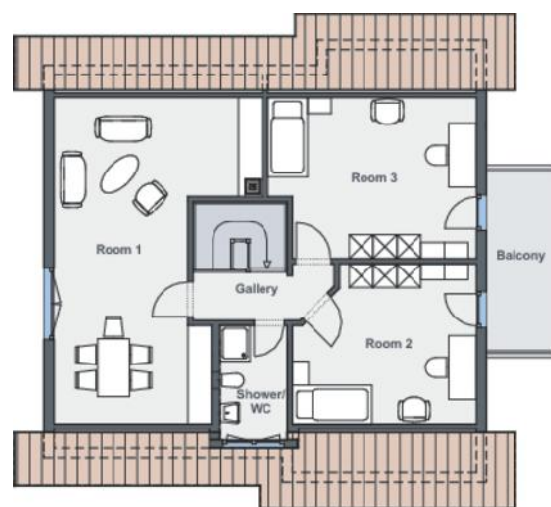
Area: 194.75 m²

Roof pitch: 34.00 °

Flap tile height: 60.00 cm

Architecture: L-shape house

Roof: gabled roof





The staggered lean-to roof gives the upper floor extra light. And it also looks good. As good as the balcony, which extends halfway around the house and provides a large, roofed terrace. This house features unusually large rooms totaling over 180m of living space. The inviting hall, the representative living and dining area with three doors to the roofed terrace, and the spacious open-plan kitchen create the perfect setting for social gatherings. This house, with its attractive and unusual appearance, offers every imaginable amenity for a family with two to three children. True to the principle of the Worlds of Living, many features such as the facade can be custom-designed.

Impuls 180-10



Exterior dimensions: 10.59m x 11.85m

Ground floor: lobby, Shower/WC, bedroom 1, living/dining, kitchen, terrace

Attic floor: gallery, bathroom, bedroom 1, bedroom 2, bedroom, loggia

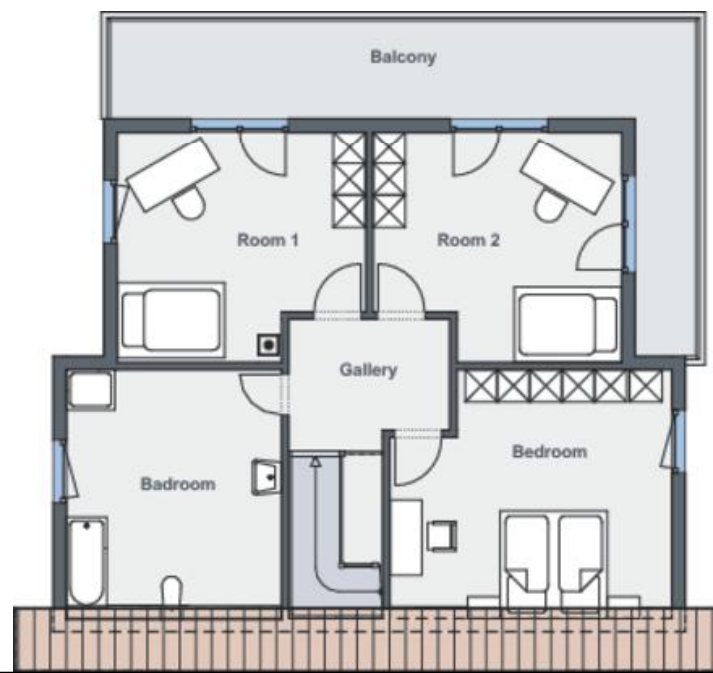
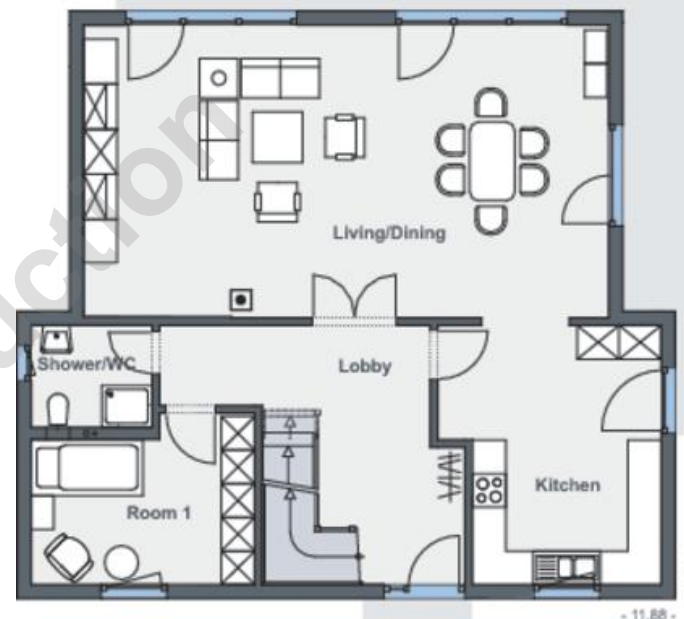
Area: 209.40 m²

Roof pitch: 25.00 °

Flap tile height: 145.00 cm

Architecture: L-shape house

Roof: offset pent roof





An L-shaped bungalow with a hipped roof is the perfect solution for the discerning homeowner. For anyone who needs plenty of space to make their personal dreams come true. This spectacular design is best suited for a couple with no children or a family with one child. As a special luxury, the house has a library. Another highlight is the roofed terrace in the angle of the L. The floor-length windows with mullions and subtle colour scheme make this bungalow a real eye-catcher.

Esprit 132-20



Exterior dimensions: 13.72m x 13.72m

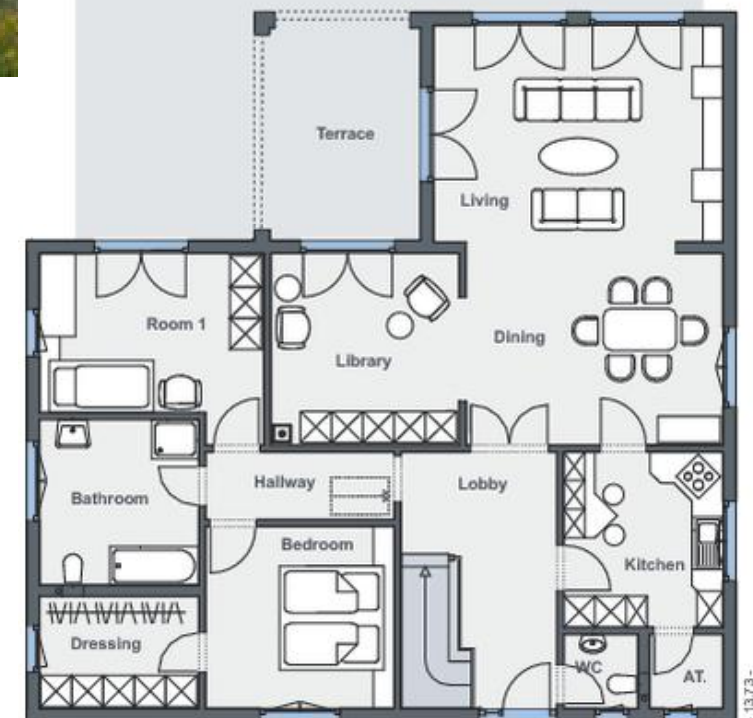
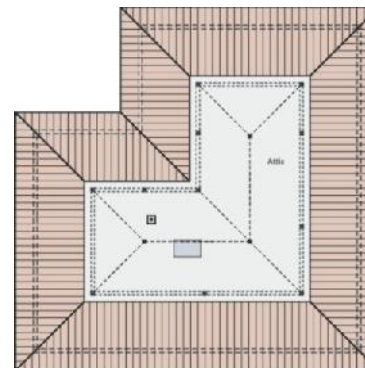
Ground floor: lobby, WC, kitchen, storage, hallway, bedroom, dressing, bathroom, bedroom 1, bedroom 2, dining, living, terrace

Area: 131.53 m²

Roof pitch: 22.00 °

Architecture: bungalow

Roof: hipped roof





The large, beautiful segmented alcove on the gable side is the most conspicuous element of this spacious rectangular home. Together with three door elements, it allows daylight to flood the large living and dining area. Every room in this house has space to spare. The ground floor includes the living and dining area and a spacious corner kitchen as well as two rooms that can be used as bedrooms or children's rooms. This means that the ground floor alone can function as a fully-fledged home for a small family, so that the upper storey can be finished at a later stage if desired. When completed, it contains a shower bath and two very large studios, one of which has a balcony.

Esprit 169-10



Ground floor: hallway, bathroom, bedroom 1, lobby, WC, kitchen, living/dining, bedroom

Attic floor: gallery, bedroom 2, bedroom 1, loggia, bedroom 3, storage, bathroom

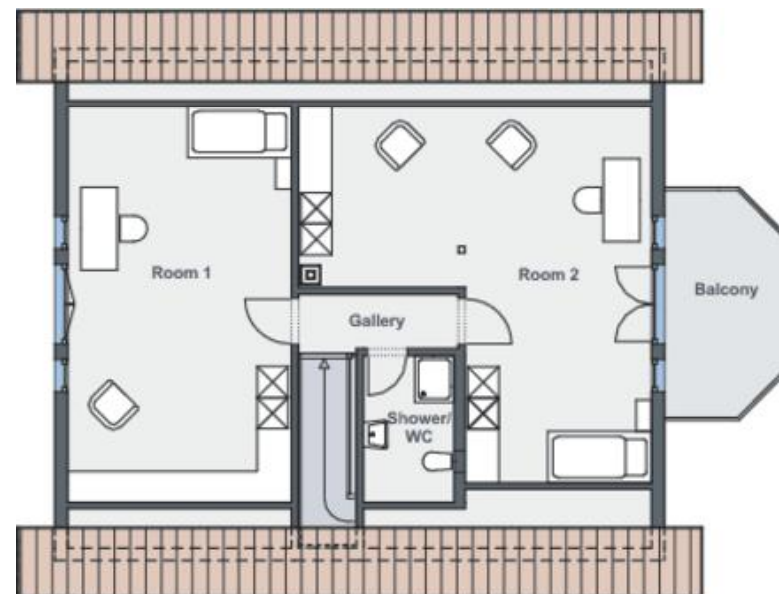
Area: 187.21 m²

Roof pitch: 34.00 °

Flap tile height: 40.00 cm

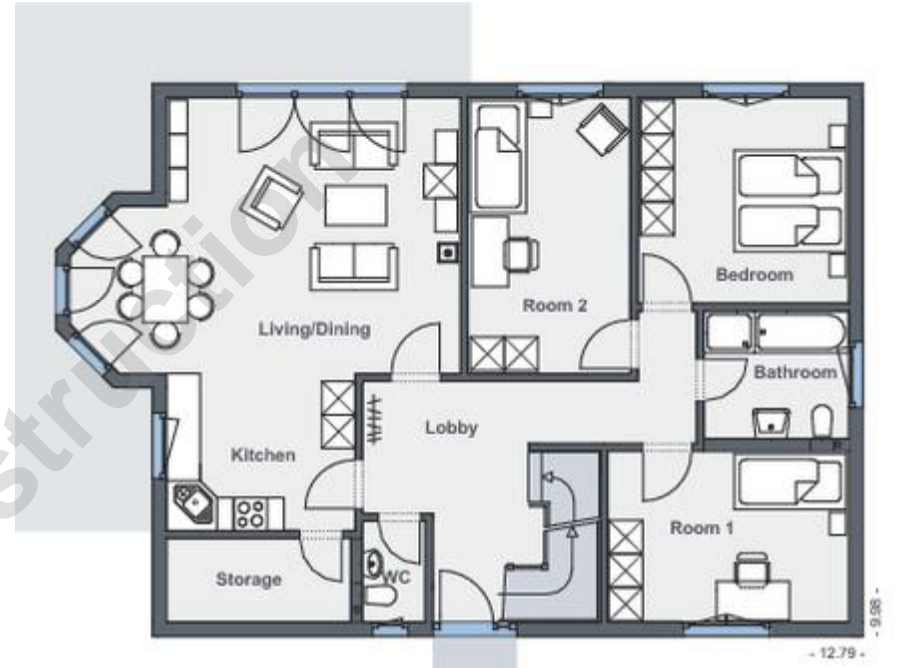
Architecture: L-shape house

Roof: gabled roof





A house to hold lots of people. Or fewer people who need ample space. With almost 180m, this house can have up to six bedrooms. And there is still space to spare for a large living and dining area with a trapezoid alcove and a kitchen with a large storeroom. The ground floor contains a spacious bathroom and three of the rooms which can be used as bedrooms, so that it is possible to leave completing the upper floor for later. When fully finished, the Esprit 178-10 is an unusually representative, spacious dwelling which offers enough space for a family of seven.



Esprit 178-10

Exterior dimensions:	9.97m x 12.79m
Basement:	bedroom 1, bedroom 2, bedroom 3
Ground floor:	bathroom, bedroom, bedroom 2, bedroom 1, living/dining, kitchen, storage, lobby, WC
Attic floor:	bedroom 3, bedroom 2, bedroom 1, Shower/WC, gallery, loggia
Area:	195.86 m ²
Roof pitch:	38.00 °
Flap tile height:	40.00 cm
Architecture:	L-shape house
Roof:	gabled roof